

ENVIRONMENTAL EDUCATION PROGRAMS

Free environmental education programs for Roswell schools and community groups.

- Perfect for classrooms, clubs, and events
- Led by knowledgeable, passionate educators
- Adaptable to your curriculum
- Promotes real-world environmental awareness



CONTACT US:

470-774-8627
enviroeducation@roswellgov.com

*To learn more, visit us
at roswellgov.com.*

TABLE OF CONTENTS

Facility Tours	3
Earth Balloon	4
Enviroscape	6
Water Conservation	7
Animal Education	8
Plant Education	9
Environmental Stewardship	10
Guided Hikes	11
Volunteer Opportunities	12
Contact Us	15

FACILITY TOURS

Roswell Recycling Center

Georgia State Standards: S3L2, S6E6, SEV3, SEV4

Enjoy a guided tour of the Roswell Recycling Center to get an up-close view of how Roswell keeps items out of the landfill. Students will discuss recycling techniques and the impacts of recycling.

Roswell Water Treatment Plant

Georgia State Standards: S3L2, S6E3, S6E6, SEV3, SEV4

Visit the Roswell Water Treatment Plant to see how water gets cleaned! Watch how water travels from Big Creek to your tap, explore high-tech equipment, and learn cool facts about water conservation along the way.

Tours are best for 3rd grade and up. Tour content is tailored to the group's age range and knowledge level.



EARTH BALLOON

Description

The Earth Balloon is a 20-foot-tall inflatable classroom featuring stunning satellite images of our planet! Perfect for schools, special events, and community groups, this immersive experience is led by a City educator and runs about an hour—bringing Earth science to life in a big way!

Rules & Regulations

- The Earth Balloon must be set up in an indoor space with a flat ground and an available electrical outlet.
- The Earth balloon is 20ft tall and must be set up in a space with a high ceiling, such as a gymnasium.
- The Earth Balloon will require one hour before and after the program for set-up and take down.
- No more than 25 people can fit in the balloon at once. Multiple program sessions will be needed if your group is larger.
- All participants **must** remove their shoes and wear socks while in the balloon.



EARTH BALLOON PROGRAMS

Oceans, Continents, and Us

Georgia State Standards: S6E3, S6E4, SES2, SES6, SG6, SO2

Enter the Earth Balloon to see the continents and oceans from a new perspective. Students will identify the various land masses and water bodies across our planet, as well as pinpoint their own geographic location!

Colors of Our World

Georgia State Standards: Pre-K, SKE2

This program is geared to younger students, who will work to point out the colors they see across our globe. Students will identify what each color represents (land, water, ice, desert) and how these resources play a role in our lives.

Out of This World

Georgia State Standards: SKE1, S2E2, S4E1, S6E2, SAST2

Students will take the role of astronauts for the day as we discuss outer space. Students will use the Earth Balloon to understand gravity, orbit, and relationships within our solar system.



ENVIROSCAPE

Description

The Enviroscope is an interactive model of a watershed. Students can view the effects of runoff and pollution on water quality within a community's watershed.

Water Quality Warriors

Georgia State Standards: S3L2, S6E3, S6E6

Explore a watershed through the Enviroscope. Students will be able to define a watershed and identify the watershed they live in. Students will experiment with the Enviroscope by introducing various pollutants (represented by food coloring) and evaluate how run-off and humans can impact water resources.



WATER CONSERVATION

Water Cycle Play

Georgia State Standards: Pre-K, S4E3

Time to get into character! Students will act out the various stages of the water cycle using props and toys. Through their roles, students will evaluate human impacts on water quality and conservation.

Water Cycle Bracelets

Georgia State Standards: Pre-K, S4E3

Using their creative skills, students will make beaded bracelets that represent the water cycle. Students will discuss how human action can interfere with the water cycle and how the water cycle can affect us.

Water Quality Testing

Georgia State Standards: S3L2, S6E3, SC6, SEV4

This community science program will give students the chance to practice real water quality monitoring techniques. Guided by the scientific method, students will measure pH and dissolved oxygen content to determine water quality. Students will then discuss their findings and identify ways water quality can be influenced.



ANIMAL EDUCATION

Roswell's Birds

Georgia State Standards: SKL2, S5L2, SZ4

It's a bird, it's a plane, wait it actually is a bird. On a guided hike, students will identify native birds, as well as evaluate their adaptations and behaviors.

Macroinvertebrate Investigation

Georgia State Standards: S2L1, S4L1, S7L4, SEC4, SEN1, SEN5, SEV1

Students will work to identify macroinvertebrates within a local body of water. Using what they find, these future biologists will determine the water and habitat quality. Students will also explore the macroinvertebrate's lifecycle and role in Georgia's food chain.

Pollinator Obstacle Course

Georgia State Standards: Pre-K, S4L1

Students take on the role of pollinators, racing to deliver pollen to flowers while dodging fun obstacles along the way! On the journey, they'll discover the vital role pollinators play in ecosystems and the real-world challenges they face in the wild.



PLANT EDUCATION

Georgia's Regions

Georgia State Standards: S3L1, S7L4, SB5, SBO3, SG6, SZ4, SZ5

Students will walk through Georgia's five amazing regions, each filled with diverse plant life, wildlife, and geographic features. Students will be able to name each region, identify their unique characteristics, and point them out on a map.

Tremendous Trees

Georgia State Standards: SKL2, SIL1, S5L1, S7L1, S7L4, SBO1, SBO5

Discover the amazing variety of trees that call Georgia home! Students will examine tree morphology and apply their knowledge by using a dichotomous key to identify local trees.

Roswell's Habitat

Georgia State Standards: SKL2, SIL1, S2E3, S7L4, SB5, SEC3, SZ4, SZ5

What habitat do you live in? Students will identify the regions of Georgia, define habitat and habitat structure, and understand how animals and plants adapt to their homes.



ENVIRONMENTAL STEWARDSHIP

Protecting Georgia's Environment

Georgia State Standards: S2E3, S3L2, S6E6, SBO3, SBO5, SEC5, SEN5, SEV3, SEV4, SO7, SZ5

Jump into a lively discussion about the environmental challenges Georgia faces today, such as water pollution, urbanization, and habitat loss. Students will work together to brainstorm real-world solutions and discover how everyday actions can help protect Georgia's natural environment.

Future Earth Heroes: Your Future in the Environment

Georgia State Standards: S3L2, SEC5, SEV3, SEV4

Perfect for career fairs and career days, this interactive presentation lets students explore exciting paths in the environmental world—from tracking wildlife in the field, designing stormwater systems, or delivering clean drinking water to communities. There are so many career paths where students can make a difference.



GUIDED HIKE

Description

Pick your favorite Roswell park or trail, and join a City educator for a fun guided hike! Along the way, the group will identify cool land features, native plants, and wildlife – plus chat about how to be responsible park stewards. Students will also learn the secrets of Leave No Trace to help keep nature happy and healthy while enjoying the outdoors!

Parks and Trails

- Roswell Area Park
- Leita Thompson Memorial Park
- East Roswell Park
- Waller Park
- Hembree Park
- Big Creek Park



VOLUNTEER OPPORTUNITIES

Adopt-A-Road

The Adopt-A-Road program enlists community volunteers to help remove litter along Roswell's roadways. Groups adopt a one-mile section of roadway and perform regular litter pick-ups. The City will install an official Adopt-A-Road sign recognizing each group for their cleanup efforts.



Adopt-A-Stream

The Adopt-A-Stream program is a citizen science initiative, where community members collect water quality data that is actually used by our state. The City of Roswell provides all the tools and trainings to Roswell community groups interested in the program.



VOLUNTEER OPPORTUNITIES

Litter Pick-up

Trash clean-ups have lasting impacts when it comes to reducing pollution and preventing habitat destruction. Groups will work with Roswell staff to complete a litter pick-up and learn how these volunteer projects improve native ecosystems.



Invasive Plant Removal

Invasive, non-native plants, such as Chinese privet and English ivy, outcompete Roswell's native plants and negatively affect native animals. Students will work to remove invasive plants and understand the importance of native species.

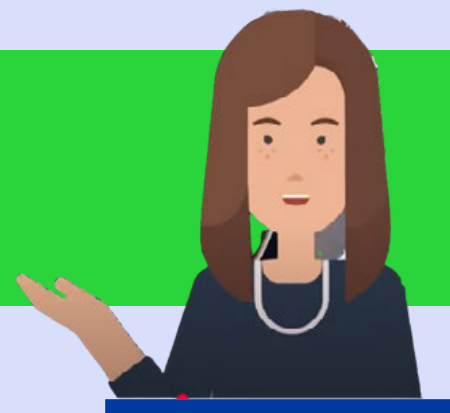
Storm Drain Marking

Stormwater is any rain that falls from the sky. Once it hits sidewalks, roads, or lawns, it begins to pick up pollution. That water then flows into storm drains and straight into our creeks, streams, and rivers—carrying all that pollution with it.

Storm drain markers are eye-catching metal signs that remind everyone: only rain down the drain! Team up with the City of Roswell to place these markers around town and stop pollution before it reaches our waterways.



TOON IN ROSWELL



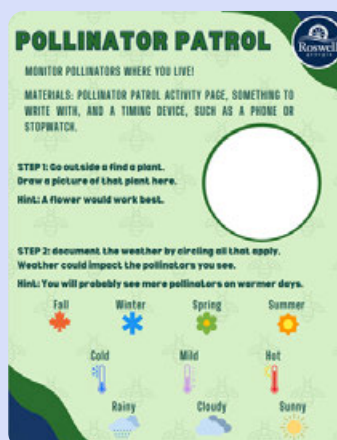
Description

Toon in Roswell is a free educational resources for kids, parents, and teachers, who are looking to learn more about Roswell and environmental stewardship. Toon in Roswell is a 10-part video series that focuses on environmental conservation topics and how they relate to the Roswell community.

Each video is about 1-minute long and is accompanied by supplementary activities, such as coloring pages, art projects, scavenger hunts, and more, to further the viewer's exploration into the subject matter.

Video Topics

- Pollinators
- Native Plants
- Roswell Recycling Center
- Roswell Parks
- Roswell's Watershed
- Saving Electricity
- Storm Drains
- Volunteering
- Water Conservation
- Roswell Water Treatment Plant



To watch Toon in Roswell visit roswellgov.com/tooninroswell.

For Questions or to Book a Program Contact Us At ...

☎ 470-774-8627

✉ enviroeducation@roswellgov.com



*To learn more, visit us
at roswellgov.com.*